



© 2023 STARBUCKS COFFEE COMPANY

STARBUCKS®
2401 UTAH AVENUE SOUTH
SEATTLE, WASHINGTON 98134
(206) 318-1575

THESE DRAWINGS AND THE PROJECT MANUAL ARE CONFIDENTIAL AND SHALL REMAIN THE SOLE PROPERTY OF STARBUCKS CORPORATION, WHICH IS THE OWNER OF THE COPYRIGHT IN THIS WORK. THEY SHALL NOT BE REPRODUCED (IN WHOLE OR IN PART), SHARED WITH THIRD PARTIES OR USED IN ANY MANNER ON OTHER PROJECTS OR EXTENSIONS TO THIS PROJECT WITHOUT THE PRIOR WRITTEN CONSENT OF STARBUCKS CORPORATION. THESE DRAWINGS AND SPECIFICATIONS ARE INTENDED TO EXPRESS DESIGN INTENT FOR A PROTOTYPICAL STARBUCKS STORE (WHICH IS SUBJECT TO CHANGE AT ANYTIME) AND DO NOT REFLECT ACTUAL SITE CONDITIONS. NEITHER PARTY SHALL HAVE ANY OBLIGATION NOR LIABILITY TO THE OTHER (EXCEPT STATED ABOVE) UNTIL A WRITTEN AGREEMENT IS FULLY EXECUTED BY BOTH PARTIES.

STARBUCKS TEMPLATE VERSION: i2023.01.30

BERGMANN
ARCHITECTS ENGINEERS PLANNERS
An affiliate of Colliers Engineering & Design
Copyright © Bergmann Architectural Associates, Inc.

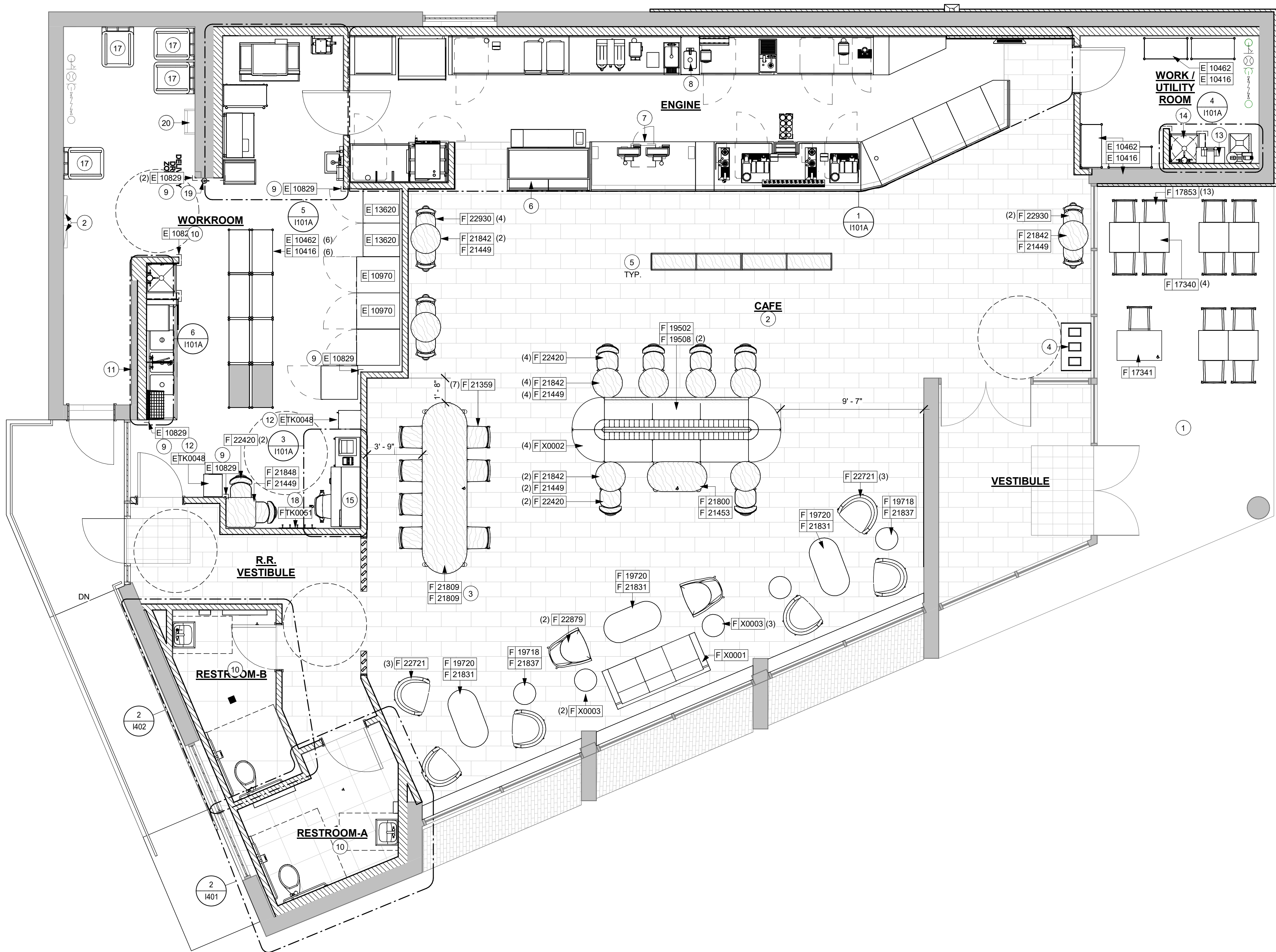
1500 John F. Kennedy Blvd
2 Penn Center, Suite 624
Philadelphia, PA 19102
www.bergmannpc.com

GENERAL NOTES

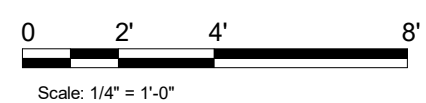
- A. GENERAL CONTRACTOR TO SCHEDULE WITH LOCAL REFRIGERATION CONTRACTOR TO CONDUCT INITIAL FOOD CASE START-UP AND TESTING. FOR LIST OF APPROVED START UP CONTRACTORS, CONTACT PROJECT CONSTRUCTION REPRESENTATIVE.
- B. THE SITE IS SERVED BY THE MUNICIPAL WATER AND SEWER SYSTEM UNLESS OTHERWISE NOTED.
- C. ALL FLOOR AND WALL JUNCTIONS IN STORAGE AND PREP. AREAS SHALL HAVE A 6" COVED BASE.
- D. ALL FOOD STORAGE SHALL BE 6" (150mm) A.F.F.
- E. ALL WOOD SURFACES (DOORS, TRIM, SHELVES, CABINETS) SHALL BE SEALED.
- F. FLOORS, WALLS AND CEILING FINISHES IN FOOD PREP. AREAS SHALL BE SMOOTH, NON-TOXIC, NON-ABSORBENT, DURABLE AND EASILY CLEANABLE. PAINT SHALL BE WASHABLE AND SEMI-GLOSS OR HIGH-GLOSS FINISH.
- G. ALL EQUIPMENT AND INSTALLATION WILL MEET NATIONAL SANITATION FOUNDATION STANDARDS OR EQUIVALENT.
- H. ALL EQUIPMENT AND CABINERY WILL BE FLUSH MOUNTED TO COUNTERS, WALLS OR FLOORS, OR BE RAISED TO ALLOW FOR CLEANING.
- I. CONFIRM ALL NECESSARY CLEARANCES PER PRODUCT CUT SHEET REQUIREMENTS FOR ALL EQUIPMENT (E.G. ICE MACHINE).
- J. FOR LOCATION OF COUNTERTOP EQUIPMENT, REFER TO CASEWORK ELECTRICAL DETAILS.
- K. EQUIPMENT UNITS SHALL CONTAIN NO EXPOSED THREADS, EMBELLISHMENTS OR OVERHANGING EDGES THAT SERVE AS PLACES FOR ACCUMULATION OF DUST, DIRT AND DEBRIS.
- L. WARMING OVEN(S) SHOWN FOR PERMITTING PURPOSES. INSTALLATION AT STORE OPENING TO BE VERIFIED BY STARBUCKS CONSTRUCTION REPRESENTATIVE.
- M. EACH HAND WASHING SINK WILL HAVE A SINGLE SERVICE TOWEL AND SOAP DISPENSER, AND ALL HAND SINKS TO HAVE A COMBINATION FAUCET OR PREMIXING FAUCET.
- N. FOR PLUMBING FIXTURES, REFER TO THE PLUMBING DESIGN PLAN. FOR DATA DEVICE SCHEDULE, REFER TO THE ELECTRICAL DESIGN PLAN.
- O. SEE ELEVATIONS FOR DISTRIBUTION OF CUP DISPENSERS.
- P. GENERAL CONTRACTOR TO COORDINATE NEWSPAPER FIXTURE ORDERING. CONTACT TRIAD MANUFACTURING BY EMAIL (starbucks@triadmf.com) OR BY PHONE (314-381-5280 X1111) TO ARRANGE SHIPMENT OF THE FIXTURE. ALLOW (5) DAY LEAD-TIME.

KEYED NOTES

- 1. INSTALL EXTERIOR FURNITURE THROUGHOUT AS SHOWN.
- 2. INSTALL CAFE FURNITURE THROUGHOUT AS SHOWN.
- 3. COMMUNITY TABLE. SEE FURNITURE SCHEDULE.
- 4. CONDIMENT CART. SEE CASEWORK PLAN AND SCHEDULES.
- 5. MERCHANDISE DISPLAY. SEE SCHEDULES FOR DETAILS.
- 6. DO NOT BLOCK FOOD CASE INTAKE/EXHAUST.
- 7. SAFE LOCATED AT POS CABINET. SEE ELECTRICAL FOR ADDITIONAL INFORMATION.
- 8. HAND SINK W/ INTEGRAL SPLASH GUARD.
- 9. INSTALL CORNER GUARD AS INDICATED. SEE INTERIOR FINISH ELEVATIONS.
- 10. REFER TO ENLARGED RESTROOM PLANS AND ELEVATIONS (SHEET I401) FOR FIXTURE LOCATIONS AND MOUNTING HEIGHTS.
- 11. LOCATION OF SWITCH GEAR AND THERMOSTAT CONTROLS.
- 12. SECURE LOCKERS TO WALL.
- 13. VENDOR TO INSTALL WATER FILTRATION SYSTEM PER MANUFACTURER'S REQUIREMENTS. G.C. TO PROVIDE PLUMBING AND ELECTRICAL REQUIREMENTS.
- 14. WATER HEATER LOCATION ABOVE PLUMBING DRAWINGS.
- 15. MANAGERS DESK. SEE MANAGER'S DESK/EQUIPMENT RACK ELECTRICAL DETAIL FOR ADDITIONAL INFORMATION.
- 16. ELECTRICAL PANELS. SEE ELECTRICAL PLANS. MAINTAIN 3' CLEARANCE AT FRONT.
- 17. TRASH BIN.
- 18. COAT RACK MOUNTED AT 48" AFF.
- 19. PLACE FIRE EXTINGUISHER IN WORKROOM PER FIRE INSPECTOR.
- 20. EXISTING ROOF LADDER.
- 21. FUTURE GROWTH EQUIPMENT. SEE ELECTRICAL DRAWINGS TO INCLUDE POWER IF APPLICABLE.



1 FURNITURE, FIXTURES, AND EQUIPMENT PLAN
Scale: 1/4" = 1'-0"



LANDLORD REVIEW - NOT INTENDED FOR CONSTRUCTION USE

PROJECT NAME:
VERONA, NJ

PROJECT ADDRESS:
30 POMPTON AVE
VERONA, NJ 07044

STORE #: TBD
PROJECT #: 95663-001
ISSUE DATE: 12/01/2023
DESIGN MANAGER: BERGMANN
PRODUCTION DESIGNER: CH/SM
CHECKED BY: AL

Revision Schedule			
Rev	Date	By	Description

SHEET TITLE:
FF & E PLAN

SCALE: AS SHOWN

SHEET NUMBER:
1101